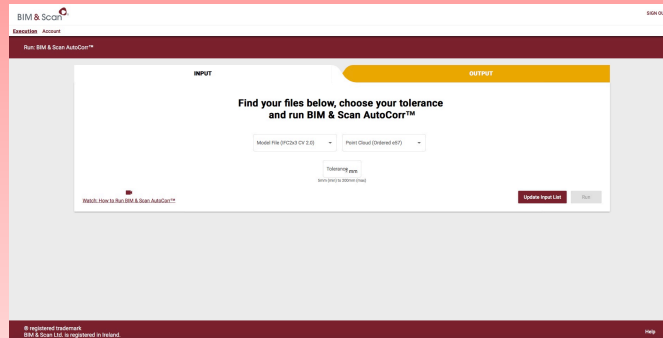


BIM & Scan AutoCorr™ workflow for Validating and Updating the As-Built BIM.

START

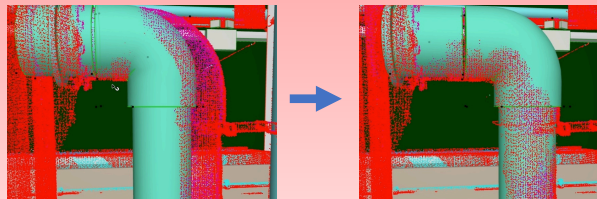
Open AutoCorr

- Upload .ifc and .e57
- Process .ifc and .e57
- Download AutoCorr Output



Open Design Application

- Open As-Built BIM
- Open AutoCorr .e57 Output File overlaid on As-Built BIM
- Using the colorized AutoCorr Output file find out of tolerance objects in the model
- Move objects into the correct position
- Export IFC2X3 CV2.0 .ifc MVD file of model with newly positioned objects

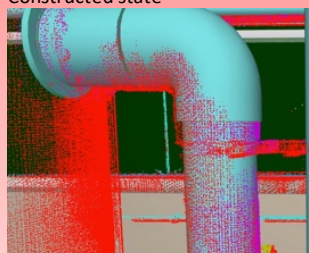


Re-run AutoCorr with the original point cloud and the new .ifc file

Open AutoCorr

- Process NEW .ifc and .e57
- Download NEW AutoCorr Output .e57

- Overlay the NEW AutoCorr Output file on the Model and see objects are now within the allowed tolerance.
- Repeat all the above steps until the As-Built Model is updated to match the Constructed state



END